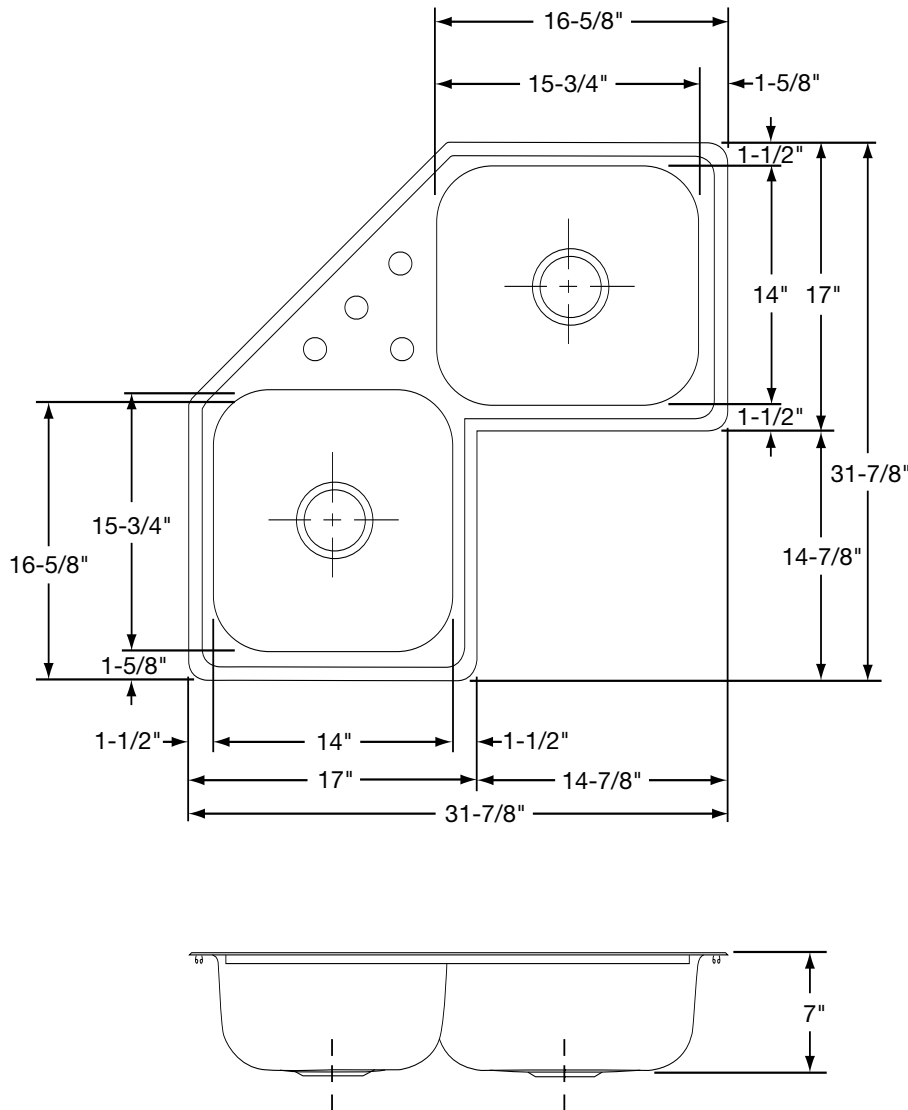




# Specification Sheet

## Carrington™ Model Double Bowl CLDC4522D7DG



### FEATURES:

- 20 Gauge 301 Nickel-Bearing Stainless Steel
- Self-Rimming / Drop-In
- 3-1/2" Center Drain Opening
- Full Undercoat Sound Deadening
- Diamond-Glo Finish
- Includes Mounting Hardware/ Clips and Screws
- Hole Drillings: 4
- Suggested Cabinet Size: 36" Corner
- Use sink as template and cut 5/16" inside sink outline with 1-1/2" radius corners

ALL DIMENSIONS IN INCHES, TO CONVERT TO MILLIMETERS MULTIPLY BY 25.4.

*In keeping with our policy of continuing product improvement, Revere Sink reserves the right to change product specifications without notice.*

*This specification describes a Revere Sink product with design, quality and functional benefits to the user. When making a comparison of other producers' offerings, be certain these features are not overlooked.*